

C SERIES

LINEAR GAS FIREPLACES



enviro.com



Ledgestone Liner – Ultra High Definition Log Set



Fluted Liner – Ultra High Definition Log Set



Black Enameled Liner – Ultra High Definition Log Set





Ledgestone Liner – Bezel Base



Fluted Liner – Bezel Base



Black Enameled Liner – Bezel Base



Ledgestone Liner – Bezel Base



Fluted Liner – Bezel Base



Black Enameled Liner – River Rock Set with Twigs



Ledgestone Liner – Ultra High Definition Log Set



Fluted Liner – Ultra High Definition Log Set



Black Enameled Liner – Ultra High Definition Log Set





LedgeStone Liner – Full Glass Tray



Fluted Liner – Full Glass Tray



Black Enameled Liner – Full Glass Tray



Ledgestone Liner – Bezel Base



Fluted Liner – Bezel Base



Black Enameled Liner – Bezel Base





LedgeStone Liner – Ultra High Definition Log Set



Fluted Liner – Ultra High Definition Log Set



Black Enameled Liner – Ultra High Definition Log Set



LedgeStone – Ultra High Definition Log Set



Fluted Liner – Ultra High Definition Log Set



Black Enameled Liner – Ultra High Definition Log Set



Specifications

	C34			C44			C60			C72		
BTU Maximum Input - NG / LP	30,000 BTU's			38,000 BTU's			51,000 BTU's			55,000 BTU's		
BTU Minimum Output - NG / LP	15,000 BTUs			17,000 BTUs			25,500 BTUs			36,850 BTUs		
Turn Down - IPI	33%			33%			33%			33 %		
FE Efficiency **	64.6%			64.3%			65.7%			61.16%		
Valve Configuration	IPI			IPI			IPI			IPI		
Venting	5" / 8"			5" / 8"			5" / 8"			5" / 8"		
Flex Venting	Up to 40'			Up to 40'			Up to 40'			Up to 40'		
Glass Size	HEIGHT 14"		WIDTH 34½"		HEIGHT 14"		WIDTH 44½"		HEIGHT 14"		WIDTH 60½"	
Visible Dimensions	16⅝"		36⅞"		16¼"		46⅞"		16⅝"		62⅞"	
Minimum Framing Dimensions †	HEIGHT	WIDTH	DEPTH	HEIGHT	WIDTH	DEPTH	HEIGHT	WIDTH	DEPTH	HEIGHT	WIDTH	DEPTH
	38"	45"	20"	38"	55"	20"	38"	71"	20"	38"	83"	20"

** Based on the measured P,4-15 rating of the IPI model. | † Please refer to owners manual for detailed installation instructions.

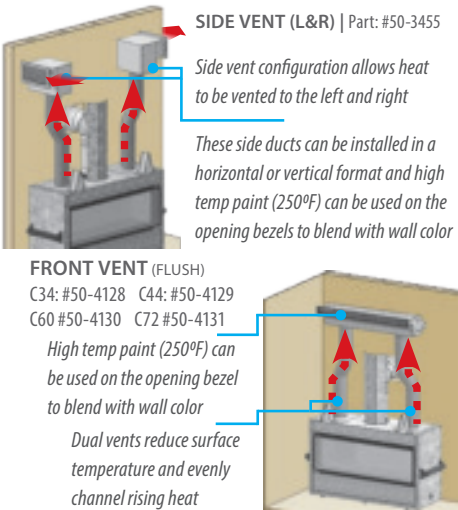
Power Vent Kit

- A minimum venting run of 10 feet
- A maximum venting run of 110 feet
- Max of 6 elbows in vent configuration
- Venting can run downward 4’ below the unit
- Flush mount (paintable) termination
- Run Quiet Fan System (noise reduction)



Cool Surface System HDK

In the past, wall mounted televisions or treasured decor pieces would degrade over time from the excess rising heat produced by your gas fireplace. Our new **Cool Surface System** for the C Series allows you to make use of the valuable real estate directly above your linear gas fireplace. It can channel heat inside the wall and vent it out above the fireplace.



Ultra HD Log Set



Compatible with all units

River Rock Set w/Twigs



Compatible with all units

Full Glass Tray



Compatible with all units

Iron Spheres Kit



Compatible with all units

Painted Steel Bezel Base



Includes Vermiculite
Included with all units

Black Glass Bezel Base



Compatible with all units

Halogen Light Kit



Compatible with the C34, C44, & C60

Optional Surrounds



Powder Coated Borderview Surround
1 1/4 Slim Line Surround Painted Black
Compatible with all units

Fluted Liner



Compatible with all units

Ledgestone Liner



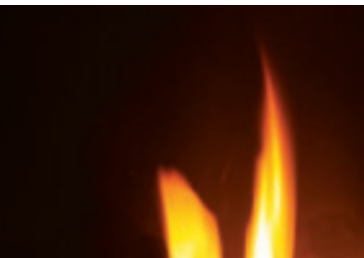
Compatible with all units

Black Enameled Liner



Compatible with all units

Painted Black Liner



Included with all units

The best way to visualize your
dream fireplace at home
is with the Enviro App!



Manufactured by Sherwood Industries Ltd. Victoria, BC, Canada | enviro.com

Printed in Canada, March 2022

